

# GAMMA 400

For Welding Professionals



**Best in class alloy 400 with extreme resistance to seawater corrosion and hot cracking**



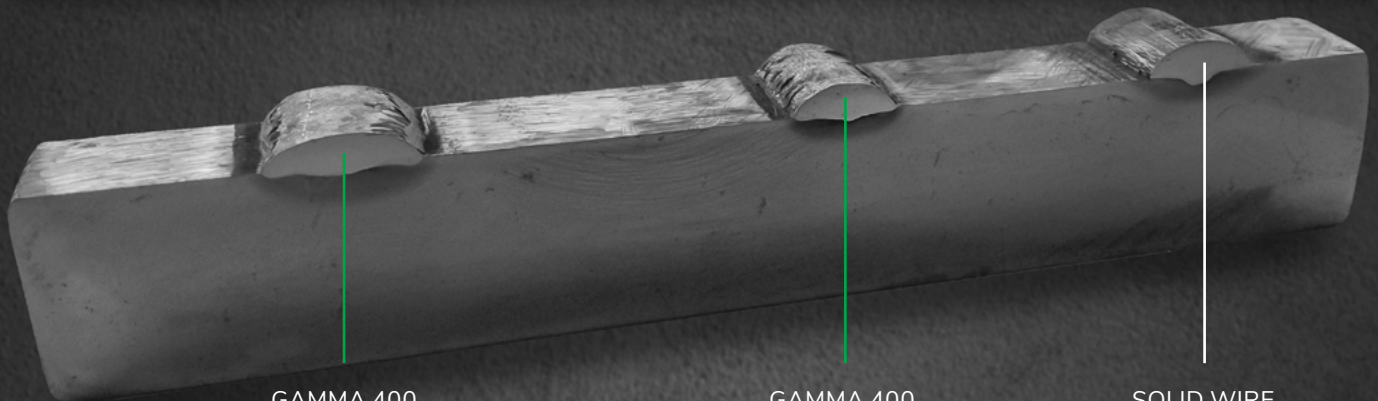
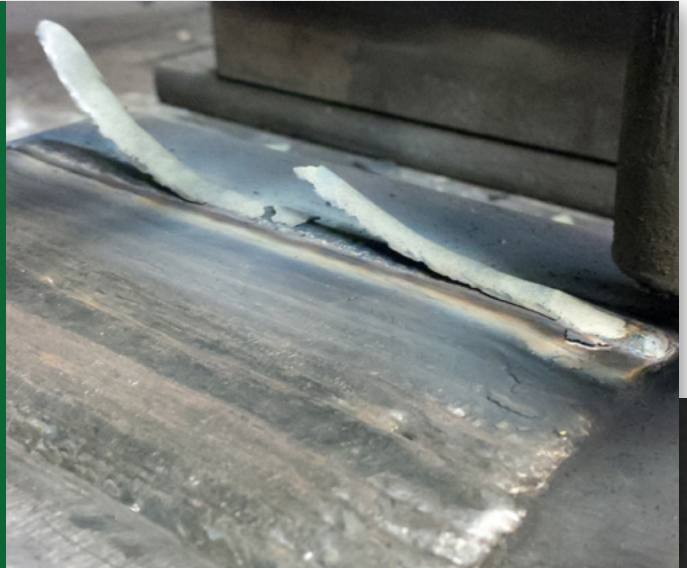
GAMMA 400 is a gas shielded basic flux cored wire made from a nickel-copper alloy. The specially designed deoxidation system is achieved through adding titanium & manganese, which eliminates porosity and provides excellent resistance to hot cracking.

The slag system of this wire has been specially developed to release by itself, leaving a clean weld surface and good wetting with the base metal.

The wire is produced from a 100% matching strip composition, offering the best solution for cladding and joining applications in marine and chemical environments.

## Why choose this solution?

- Semi-automatic and automatic process
- Excellent resistance to hot cracking due to the alloying elements of Ti & Mn
- Outstanding surface appearance with no oxidation thanks to the slag system
- Lower dilution compare to solid wire (10-20%)
- No special pure nickel buffer layer required for cladding applications
- +2.5 times greater productivity vs stick electrodes



GAMMA 400  
DC+  
215A - 25V  
29cm/min

GAMMA 400  
DC+  
215A - 25V  
29cm/min

SOLID WIRE  
PULSED  
215A - 26V  
29cm/min

## Product Details

**EN ISO Classification:** T Z Ni 4060 (NiCu30Mn3Ti) B M21 3

**ASME Classification:** ENiCu7T0-4 / TNi4060-041

**Available Diameter:** 1.2 mm, 1.6 mm

**Welding Positions:** ↙ ↓



[contactus@welding-alloys.com](mailto:contactus@welding-alloys.com)  
[www.welding-alloys.com](http://www.welding-alloys.com)

