

HARDFACE HC-O

For Welding Professionals



The first choice for increased resistance to abrasive wear



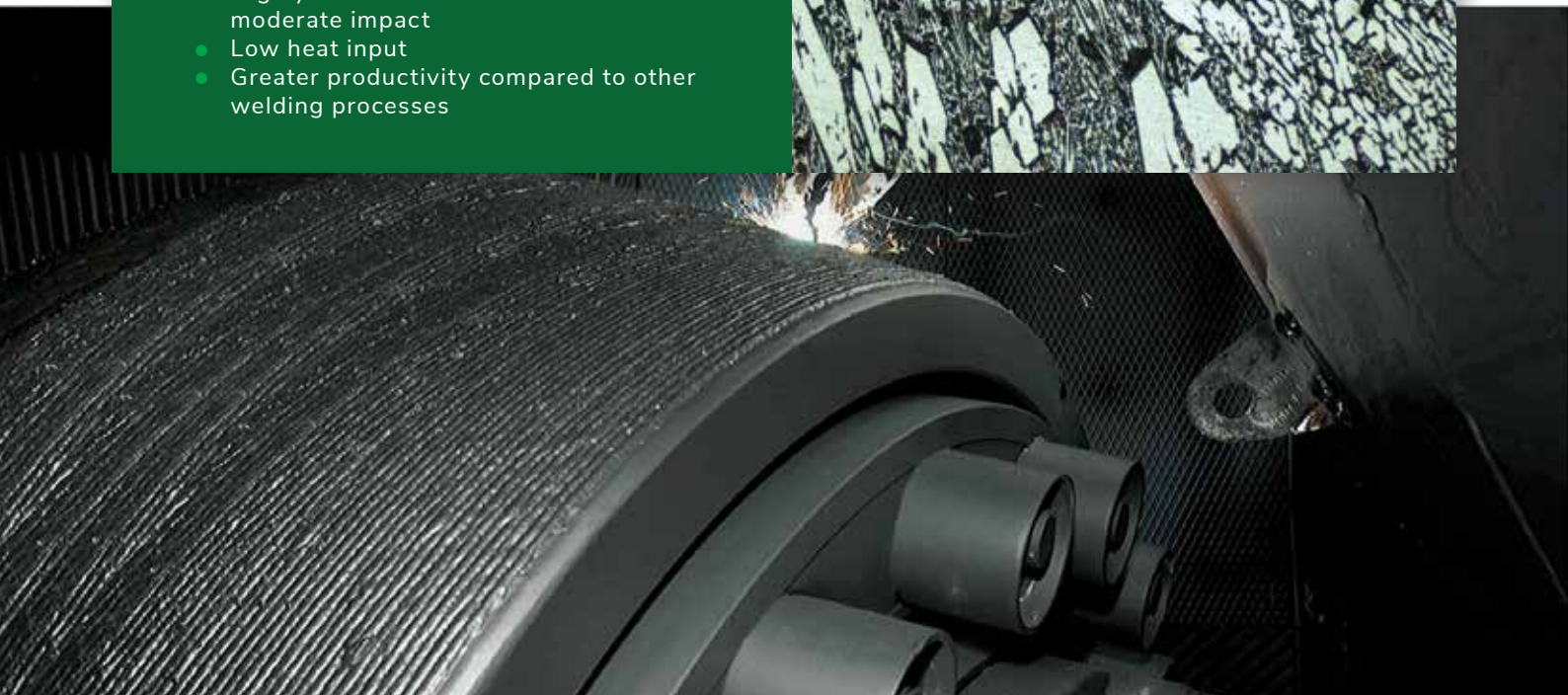
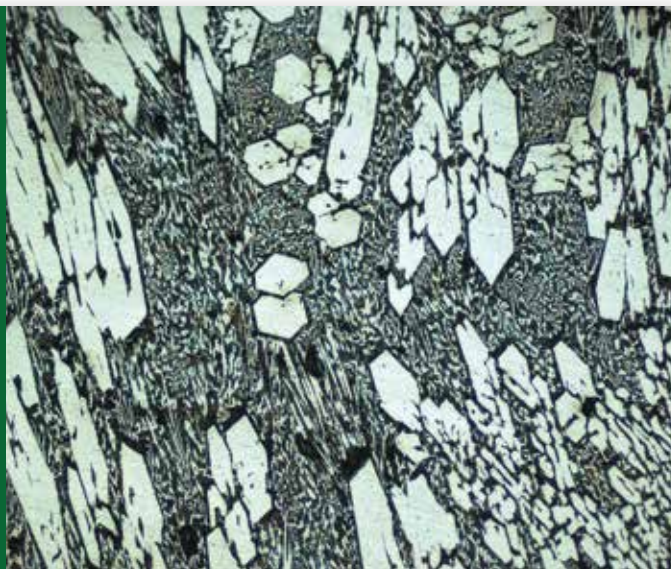
HARDFACE HC-O is a self shielded cored wire with a high chromium cast iron deposit, containing a high proportion of hard primary chromium carbides in a tough austenitic matrix.

This open-arc cored wire is the ideal solution to hardface components subject to extremely severe abrasive wear and moderate impact.

HARDFACE HC-O can easily be used on-site, and even under difficult atmospheric conditions; as it can be used without a shielding gas.

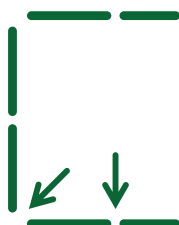
Why choose this solution?

- Semi-automatic, automatic or robotic process
- Combination of primary and eutectic chromium carbides in a tough matrix
- Clean surface with stress relief cracks
- Easily removable slag islands
- Outstanding welding performance
- Highly resistant to severe abrasion and moderate impact
- Low heat input
- Greater productivity compared to other welding processes



Product Details

Classification:	EN 14700: T Fe15
Available Diameter:	1.2 mm, 1.6 mm, 2.4 mm, 3.2 mm
Hardness:	58 - 64 HRC (as welded, three-layer deposit)
Welding Positions:	



contactus@welding-alloys.com
www.welding-alloys.com

