

HARDFACE NICARBW

For Welding Professionals



**Tungsten carbides to combat
the most severe stresses**

Drilling screw



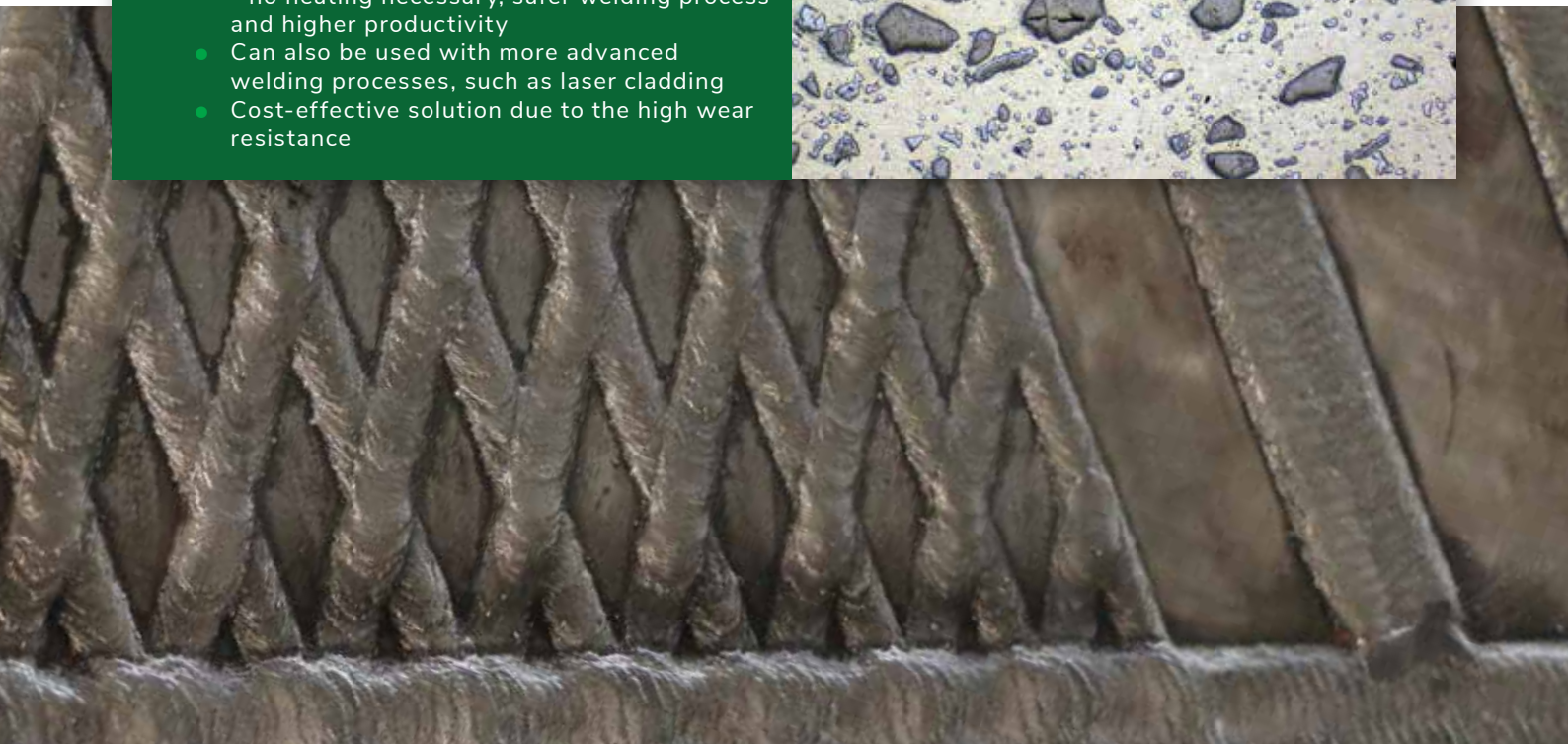
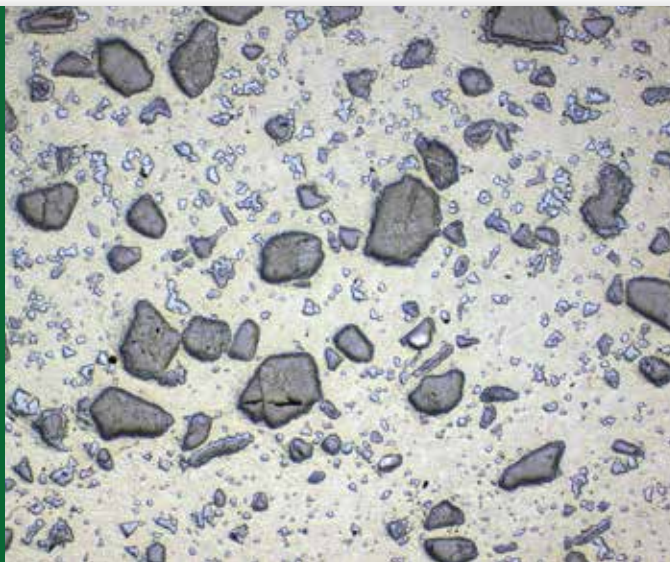
HARDFACE NICARBW is a nickel based metal cored welding wire filled with advanced cast tungsten carbides.

Excellent weldability and high quality welding deposit, with optimised hard particle distribution in the matrix.

Great versatility in terms of operability, as it can be used with or without a shielding gas.

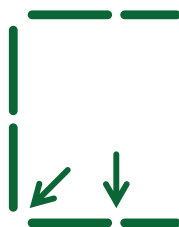
Why choose this solution?

- Optimised combination of toughness (Ni matrix) and wear resistance (extremely hard carbides)
- Outstanding weld appearance
- Repairable - as it can be applied in multiple layers
- Alternative to flexible rope applied with flame - no heating necessary, safer welding process and higher productivity
- Can also be used with more advanced welding processes, such as laser cladding
- Cost-effective solution due to the high wear resistance



Product Details

Classification:	EN 14700: T Ni20
Available Diameter:	1.2 mm, 1.6 mm, 2.4 mm, 2.8 mm
Hardness:	45 - 55 HRC (as welded, three-layer deposit)
Welding Positions:	



contactus@welding-alloys.com
www.welding-alloys.com

