

# Tuffplate™

For Welding Professionals



## Impact resistant composite overlay wear plate

Tuffplate™ is one of our premium welded, composite overlay products. This unique plate breaches the gap that previously existed where suppliers could either completely address abrasion or impact, but not both phenomena with a single wear plate.

Tuffplate™ comprises a low carbon construction steel base, hardfaced with an alloy containing extremely hard, finely dispersed titanium carbides in a martensitic matrix with a high chromium content.



## Features

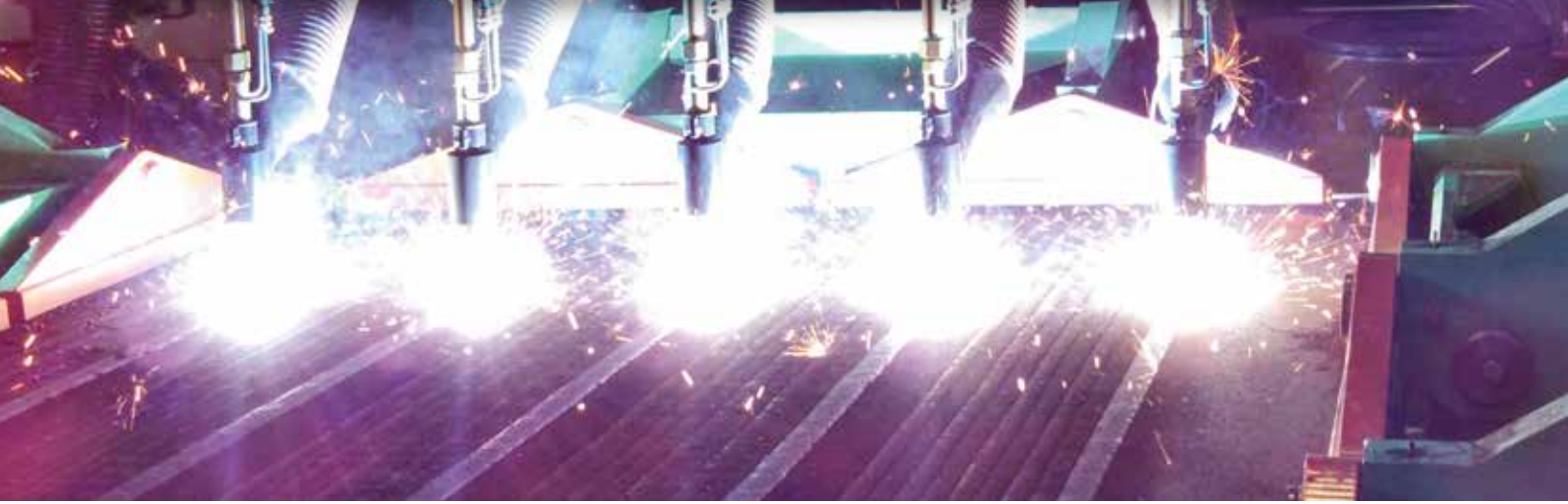
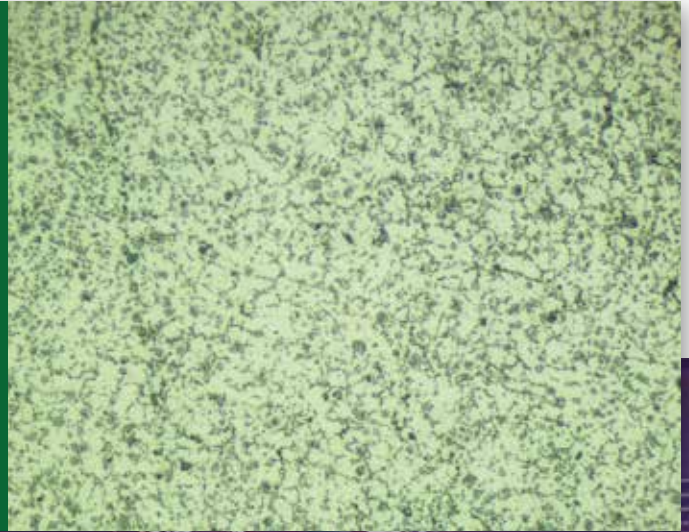
- Overlay thicknesses from 4 - 8 mm
- Wear resistance is fully maintained at temperatures of up to 200°C (390°F)
- Available as flat and tubular products
- Hardness of 56 - 58 HRC
- Various fitment options are available, based on installation requirements and customer specifications
- Excellent resistance to a combination of abrasion and impact

## Benefits

- Increased service life of parts
- Reduced downtime
- Reduced total cost of ownership
- Improved production throughput
- Through-thickness wear rate
- One product to combat multiple wear phenomena

## Why choose this solution?

- Ideally suited for areas of material transfer and transportation
- Most suitable for areas subject to a combination of abrasion, pressure and impact
- Continuous solution development
- Can be supplied as pre-cut profiles to drawings or as manufactured components
- Integra™ service centres located globally



## Improved Performance

Even distribution of both titanium and chromium carbide particles results in a stable through-thickness wear rate. The combination of both a stable through-thickness and reduced wear rate ensures parts operate

at optimum efficiency levels for prolonged periods of time. Tuffplate™ is the ideal solution for applications subject to abrasion, pressure and impact such as, hammers, mobile equipment, hoppers and chutes.



[contactus@welding-alloys.com](mailto:contactus@welding-alloys.com)  
[www.welding-alloys.com](http://www.welding-alloys.com)

