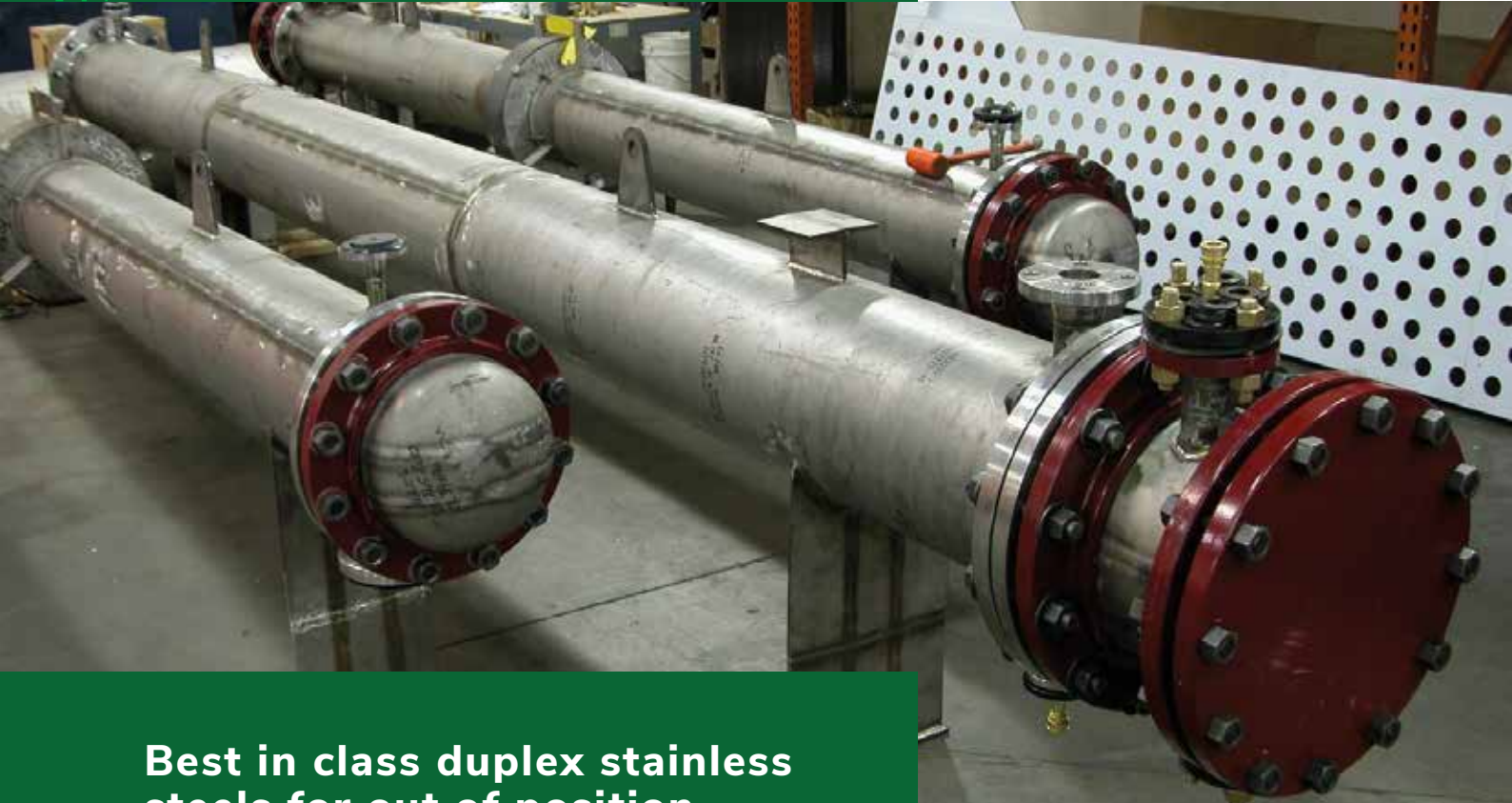


# TETRA V 22 9 3L-G

For Welding Professionals



**Best in class duplex stainless steels for out of position welding**



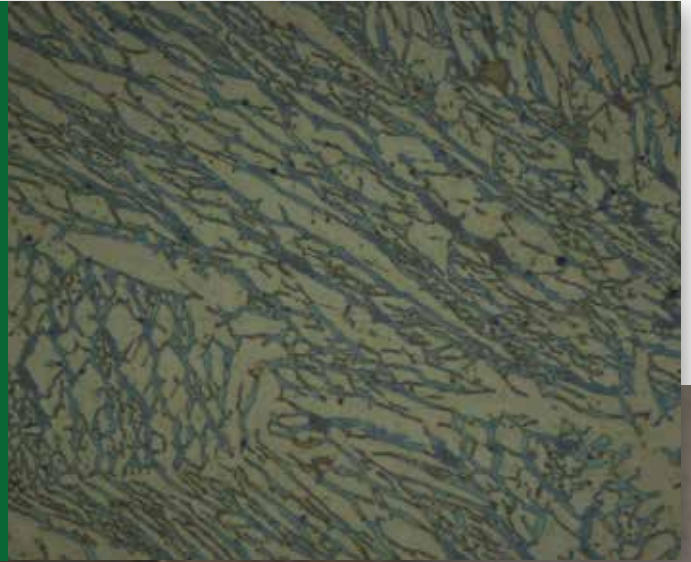
TETRA V 22 9 3L-G is a flux cored wire with fast freezing slag, providing a duplex 2209 welding deposit (austenitic-ferritic structure).

This wire is specially designed for out of position welding and is predominantly used to join 22 05 (UNS S31803) duplex stainless steels. However, it can also be used for dissimilar joining, for example, stainless steels or duplex to carbon manganese steels.

TETRA V 22 9 3L-G provides extremely high resistance to pitting corrosion in severe conditions;  $PREN = Cr + 3.3 Mo + 16 N \geq 35$  and  $CPT = 25 \text{ }^\circ\text{C}$ , and high strength compared with standard austenitic stainless steels.

## Why choose this solution?

- Semi-automatic and automatic process
- Maximum productivity for vertical-up welding
- Self-releasing slag and attractive bead appearance
- Highly controlled PREN-value providing excellent corrosion resistance
- Ideal solution to fight standard corrosion, chloride induced stress corrosion cracking, pitting attacks



## Product Details

**Classification:**

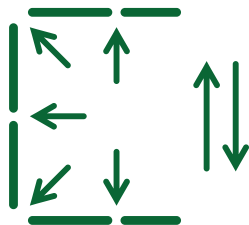
ISO 17633-A: T 22 9 3 N L P M21 1

AWS A5.22: E2209T1-4

**Available Diameter:**

1.2 mm and 1.6 mm

**Welding Positions:**



[contactus@welding-alloys.com](mailto:contactus@welding-alloys.com)  
[www.welding-alloys.com](http://www.welding-alloys.com)

