

# STELLOY 6-TIG

For Welding Professionals



**The most popular cobalt based solution for corrosion and heat resistance**



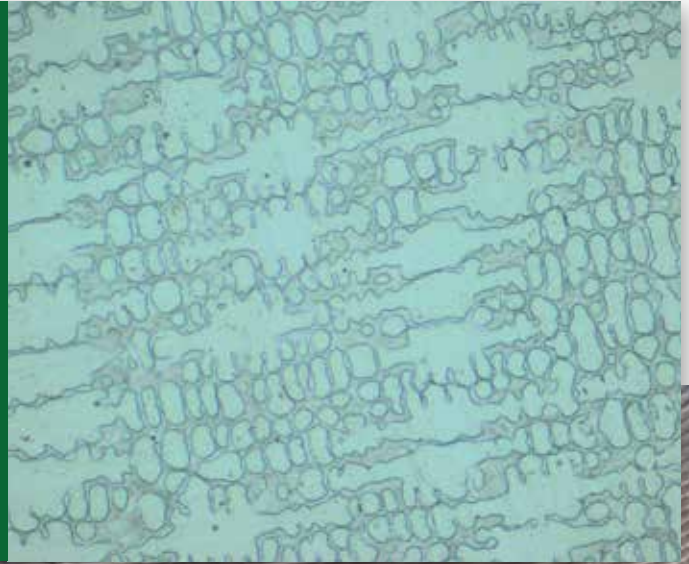
STELLOY 6-TIG is a metal cored wire for automatic GTAW welding. It offers all of the superior properties provided by cobalt based alloys, as well as abrasion and erosion resistance.

This wire can be used for a wide range of applications, such as petrochemical and industrial valves, valve seats of marine engines, pump sleeves and shafts, as well as hot shearing tools.

The wire produces a moderate hardness deposit that has good machinability.

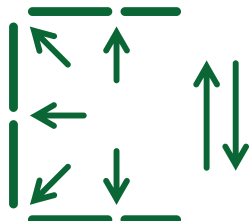
## Why choose this solution?

- Automatic or robotic process
- Outstanding weld appearance with extremely low silicate residue
- Consistent weld deposit
- Maintains hardness in elevated temperatures and can be machined
- Exceptional resistance to metal-to-metal wear, oxidation, erosion, thermal shocks in corrosive media at high temperatures
- STELLOY 6 can also be used with plasma and laser welding processes
- Cold or hot wire



## Product Details

<b>Classification:</b>	EN 14700: T Co2 AWS A5.21: ERCCoCr-A
<b>Available Diameter:</b>	1.2 mm and 1.6 mm
<b>Hardness:</b>	40 - 44 HRC (as welded, three-layer deposit)
<b>Welding Positions:</b>	



[contactus@welding-alloys.com](mailto:contactus@welding-alloys.com)  
[www.welding-alloys.com](http://www.welding-alloys.com)

